



## ButtonStar Deluxe Help

**Shareware Note:** This version of ButtonStar Deluxe is for product evaluation only. All the functions, features and buttons are fully operational. There is however, a 30 day time limitation starting from the day you install the program. At the end of 30 days the program will no longer function. When you register this product you will receive the latest version of ButtonStar and a printed User's Guide.

ButtonStar Deluxe is a feature rich program launcher for Windows 3.1. It has been designed to replace or use along with Windows' Program Manager. ButtonStar Deluxe features a total of 151 buttons that can be configured to launch any program, pif file, or batch file you care to set up. Following are a listing of topics to better help you use [ButtonStar Deluxe](#).

### Getting Help

### How Best to Use ButtonStar

### System Menu Controls

### Configuring a Button

### Configuring Program Launch Options

### Changing ButtonStar's Layout

### Change a Button's Position

### Using the Popup Task Manager

### Using the Run Button

### Navigating ButtonStar

### Setting a Reminder Alarm

### Product Registration Information

## Configuring a Button



ButtonStar's initial setup automatically configures the first 17 buttons for you. The first two buttons (shown above) are permanent and can not be altered. The remaining pre-configured buttons are set for the standard Windows' programs and accessories. You can configure for these your own use or leave them as is.

Button Configuration Menu

Button No. 19    Set As Group     Button Icon

**ButtonStar Program Title**

AmiPro 3.0    **Browse**

Path and Program Name

C:\AMIPRO\AMIPRO.EXE ?\*.SAM    **Options**

Working Directory Name

C:\AMIPRO\DOCS    **Clear**

Icon File Path and Name to Attach

C:\WINDOWS\BBARICON\AMIPRO.BMP    **Save**

**Exit**

### 1. Configure a New Button.

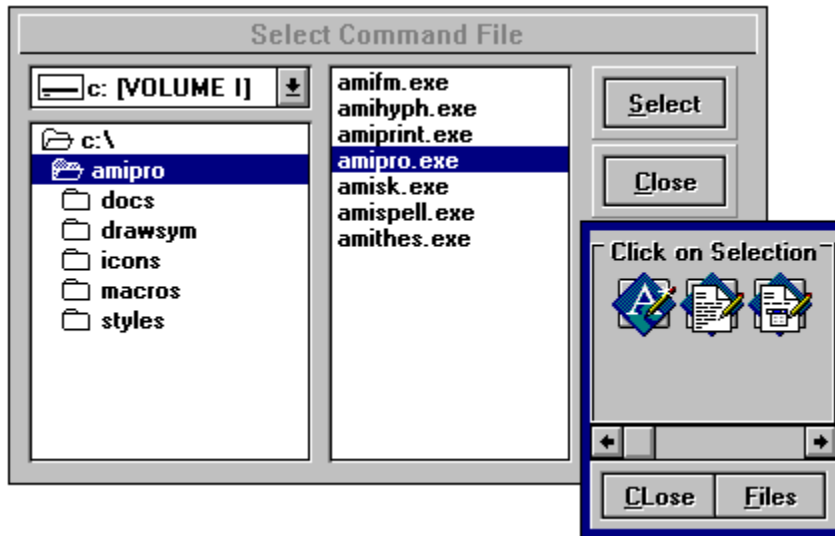
Click the System Menu and select Configure a Button. The *Configuration Window* will pop up center screen. Now Click on the ButtonStar Button you want to setup up. The Button Number and Current Icon will appear at the top of the menu. *Note:* You can use the keyboard to select a button by holding down the Control Key and maneuvering with the Cursor Arrow Keys.

### 2. Making a Group.

To create a Button Group, click the **Set as Group** check box. Next, enter the group name in the ButtonStar Title Line. You will notice a default group icon has appeared in the select icon box. You can use this icon to represent your group, or click the **Browse** button and select another. See [Configuring and Using a Group](#)

### 3. Selecting a Program

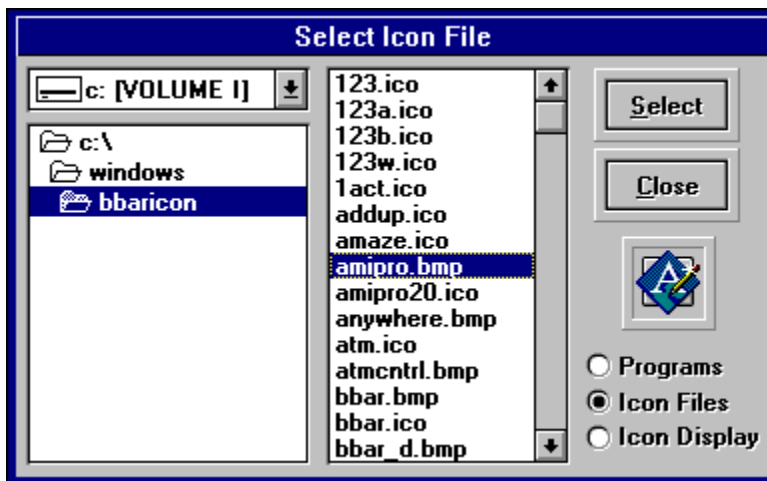
Press the **Browse** Button. A file selection box will pop up, where you select the program file you want to add to ButtonStar. Double-Click the mouse cursor on the selected file (or Click once and press the Select button).



#### 4. Select an Icon

You will then see *Icon Select Menu*, where if the selected program is a native window's program, the first 6 icons (If available) will be shown§. Click the icon that will represent this program to you. The *Select Command Window* will disappear and *Button Configuration* window will come to the fore front. The Program Name, Working Directory and Icon Path fields will be filled in with the choice you made. The final step is to type a Program Title in the top field as you want it to appear on the *ButtonStar* caption. This title will show on the menu bar as you pass the mouse pointer over the button.

§ **Note:** When the *Icon Display* window is displayed, you can choose from another list of icons by clicking the scroll bar or click the **FILE** button and select another file which contains icons to use.



#### Configuring a DOS Based Program

Follow the above instructions up to the point of the *Icon Select Bar*. Since a DOS program doesn't have icons embedded in it, none will show on the bar. The File select box will shift to the *BBARICON* directory. There you can pick from any of the icons shown and apply them to your program selection or click the **Icon Display** radio button, adjust the scroll bar and pick from any of the 102 icons located in the *MorIcons.DLL*. You can also click the **Files** button and select another file (like *PROGMAN.EXE*) which contains icons to use.

## **Save and Exit Menu**

Press the **Save Button** to save your button configuration, you will notice that Icon you chose will appear on the ButtonStar. Now, pick another button to configure or press the **Exit Button** to close the Configuration Menu.

See [Configuring Other Options](#) for ButtonStar Program Loading Options.

# How To Use ButtonStar

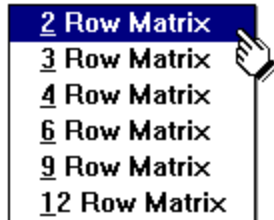
ButtonStar Deluxe was designed to make the Windows Desktop easier to use. Programs that you use most often are just a mouse click away. Program manager can be very clumsy, and it's icons have a tendency to move around.

You can use ButtonStar Deluxe as your Window's Shell, instead of Program Manager. See System Menu Controls for more information.

To use ButtonStar along with Program Manager, it is more convenient if ButtonStar is loaded at the start of your windows session. There are two ways to accomplish this, either drag the ButtonStar Icon into your Program Manager **Startup** group (Windows 3.1) or add BBAR.EXE to the "load=" line in your Win.ini file.

## ButtonStar Screen Layout

ButtonStar Deluxe's default layout is 2 rows of 18 buttons, located across the top of the screen. You can reposition ButtonStar on screen, by placing the mouse pointer on ButtonStar's Menu Bar and holding down the left mouse button. Now move ButtonStar to a new location and release the mouse button.



To change the ButtonStar layout, click the System menu and then click the ButtonStar Layout menu, and select the matrix you want.

When you exit Windows or close ButtonStar, the last screen position and Button matrix will be saved. The next time you run ButtonStar, it will be in the same place you left it.

## Changing A Button's Position on the Bar

An Icon's position on the ButtonStar can be moved to a new location by using the *Move Button* option. To employ this feature, follow these steps:



### Move Icon

1. Click the ButtonStar System Menu Button, then select the *Move Button Position* Menu. ButtonStar is now in the **Icon Move Mode** (indicated by the 4 arrow mouse cursor), and it will remain this way until it is de-selected by clicking *Move Button Position*.
2. Now using your mouse, click the Button you wish to move once, then click again and hold the mouse button down. A small **Hand Icon** will appear, indicating a button move in progress. Now Drag and Drop the "Hand Icon" to it's new position. The target button will be switched with the source button.
3. Now click the *System Menu*, then *Move Button Position* to complete this operation.

**Moving to a Group** - you can move a button from the main button bar to a group using the same method as discribed above. If the group you wish to move a button is not visible, then double click the group icon with the **Right Mouse Button** to display the group and make your button move.

**Note:** If you want to move a button to the other ButtonStar page, drag the "Hand Icon" over the right or left hand arrows and the page will change. Continue to hold the mouse button down until the "Hand Icon" is over the desired location, then release the mouse button.

## Using The Run A Program Button

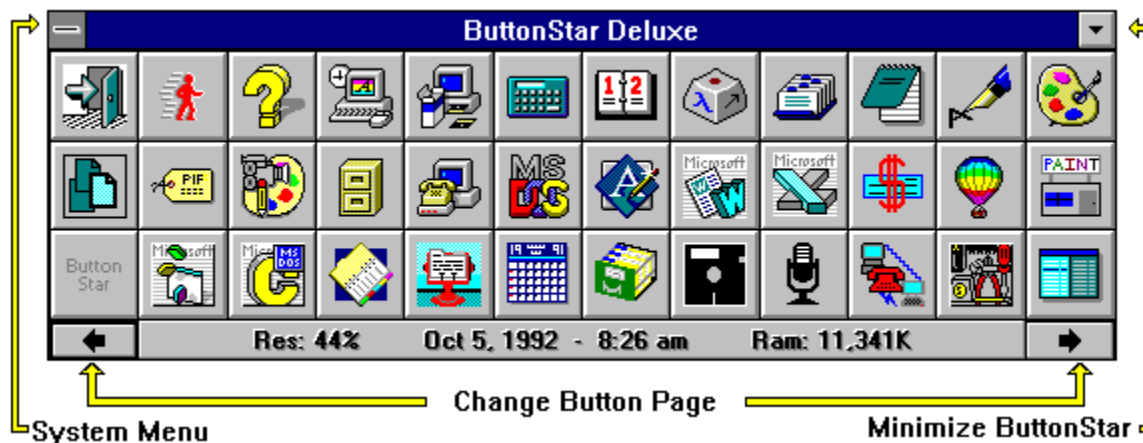


When you need to run an infrequently used program or maybe a program on a floppy disk, press the *Run A Program* button. A Drive/Directory box will pop-up center screen, where you select the drive, directory and program by clicking on the required box. Consult your Windows manual for a more detailed explanation of File Box navigation.



# Navigating ButtonStar

ButtonStar Deluxe consists of 151 icon buttons, of which 36 buttons are visible at a time. In the lower left and right hand corners are small arrows pointing in the opposite directions. The right arrow displays buttons 37 through 72, and the left button displays buttons 1 through 36. In addition, movement around the ButtonStar is possible by using combination of the Control Key and direction keys.



## Using the Key Board and Short Cut Keys:

- |                                   |   |
|-----------------------------------|---|
| <b>1. Control - Home</b>          | Move to the first button on ButtonStar  |
| <b>2. Control - End</b>           | Move to the last button on ButtonStar   |
| <b>3. Control - Left Arrow</b>    | Move one button to the Left   |
| <b>4. Control - Right Arrow</b>   | Move one button to the Right  |
| <b>5. Control - Up Arrow</b>      | Move up one button vertically   |
| <b>6. Control - Down Arrow</b>    | Move down one button vertically   |
| <b>7. Control - Page Up</b>       | Display ButtonStar page one   |
| <b>8. Control - Page Down</b>     | Display ButtonStar page two   |
| <b>9. Control - M</b>             | Toggle "Move Icon Position" mode  |
| <b>10. Control - C</b>            | Configure a Button mode   |
| <b>11. Control - A</b>            | Add or Edit a Popup Reminder  |
| <b>12. Escape Key</b>             | Cancel "Move Icon Position" mode  |
| <b>13. R/H Mouse Button Click</b> | Over a ButtonStar Button - Configure that button<br>Over Windows Desktop - Displays PopUp TaskManager |

# ButtonStar Deluxe

ButtonStar Deluxe was written by Mark DiBiasio. The ButtonStar Deluxe program, Help File and associated files remain the property of Mark DiBiasio. One license is granted per registered user, per machine. Corporate and Government Users are required to purchase a site license.

***Any questions or problems please contact:*** Mark J. DiBiasio

DataDesign Systems, Inc.  
dba Software City - Gaithersburg  
15958-B Shady Grove Road  
Gaithersburg, Maryland 20877  
Tel. (301) 670-0818  
Fax (301) 330-5087

© Copyright 1992 - Mark DiBiasio - December 9, 1992

Windows is a Trademark of Microsoft Corporation

## Configuring Program Launch Options

After you have selected a program using the BROWSE button, you can further customize this button by adding Launch options. Clicking the OPTIONS button will pop "Set Program Options" menu to center box. Options can be changed at anytime. The "OK" button at the bottom of the Options screen will set your choices, while clicking the "CLEAR" button will remove your settings.

### Program Launch Switches



**Put on PopUp.** Click this check box if you would like to have this program available on ButtonStar's Popup Task Manager. See [Using the Popup Task Manager](#)

**Launch Program in a Minimized State** option. There are many programs you may wish to start in an Minimized Icon state. **Note:** Holding the Shift Key down and clicking a button will also start an application in a minimized state.

**Prompt for Command Line** option. Use this option if you want to be prompted for a command line switch before the program is loaded. Now, when this program is launched, a query box will pop up and ask for the command line switch.

**Load with Files Box** option. Many Window's programs can be started with a command line switch. For example, say you want to load a Readme.txt file into NotePad, now you can run Notepad and use its Filebox function to load the file or can do this same thing in one motion with ButtonStar. To use this option, click the button, then select an extension mask to use from the drop down list. The mask is used to select from a list only files with a specified extension. The default mask is "\*.\*", which shows all files. You can type in your own mask or multiple masks by separating them with a semi-colon. (i.e. **?\*.txt;\*.ini;\*.ans**).

The following option is available, but must be entered manually on the Button Configuration screen:

**[% switch] Launch Program with Environmental Variable** option. Network users may wish to load a program with a variable that was set during the network logon process. To use the option, just specify the variable (in upper case letters) on the "Program Name and path field" line, (i.e. F:\WPWIN.EXE F:\WPDOC\%USER%\LETTER.WP). The "%USER%" will be replaced with the environment variable.

### **Program Auto-Load Options**

Similar to the "Start Up" group in Program Manager, but much more powerful, you can configure any program to load or run at the beginning of your Windows session. In addition, ButtonStar Deluxe features a "System Idle Launch" option, which will only launch a designated program when your computer has been idle for 90 seconds or more. Any mouse movement will further delay the launch or interrupt one in progress. The advantage of the "System Idle Launch" is you are not forced to wait for programs to launch, this is especially helpful to those users who are in and out Windows many times a day. There is a 21 item limit for auto-launch programs.

**Load on ButtonStar Startup** - Loads program in minimized (icon) state.

**Run on ButtonStar Startup** - Runs program in normal state

**Load when System Idle** - Loads program as an icon 90 seconds after the last mouse movement.

**NOTE:** 1)The Auto-Launching Feature is only available when ButtonStar Deluxe is the Windows Shell.

2)You can over-ride a System Idle launch by pressing the Control+L key or clicking the System

menu and selecting the Over-Ride Auto Launch item. Your programs will launch immediately.

# Getting Help

Any time you want this Help File.. just press the F1 Key.

Programs are executable files, ending with the extension .exe, .com, .bat, or .pif. (i.e. Command.Com)

Programs written and designed to operate in the Windows environment. DOS based will also operate under windows, but they are not aware of windows, nor do they share common functions

The term Shell refers to the main Windows control program, that is designed to allow the user to launch applications. The Default Windows Shell is Program Manager.



The Windows' Desktop is the screen background area. Currently running applications exist on top of the desktop.

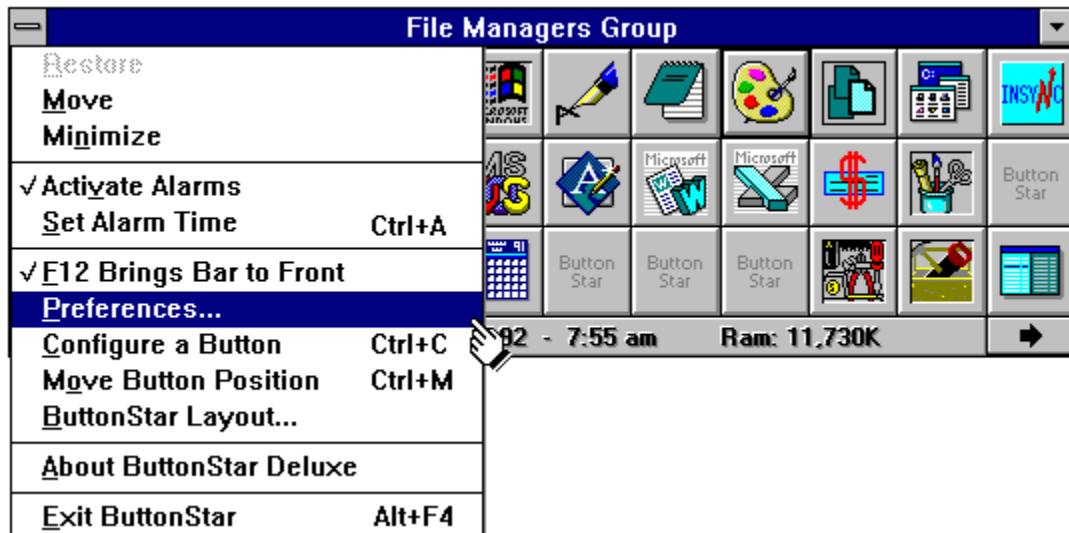
## Configuring a Group



The group is a nine button subset of a standard ButtonStar button. You can set up to nine groups which can have nine buttons each. Once a button has been earmarked as a group, you configure these buttons as you did the main buttons.

1. Click the System Menu, then select *Configure a Button*. The button setup windows will appear. Now click the Group you wish to edit.
2. The Group box will appear to the left of the *Button Setup* window. Just click the button on the group you wish to configure and follow the same procedure as configuring a standard button.
3. Remember to click the *Save* button after each configuration, then click the *Exit* button when your finished.

# ButtonStar Deluxe System Menu Controls



The majority of ButtonStar's controls are located in the ButtonStar System Menu. Each menu selection will either toggle a user option or display an action window. Following is a explanation of each menu selection.

The first three Menu Items, **Restore**, **Move**, and **Minimize** are standard window functions

**Activate Alarms** - This toggles ButtonStar's Reminder alarm feature. When the menu item is check marked then any alarm reminders that are set will execute at the time and date configured.

**Set Alarm Time** - This menu selection will display the Alarm Reminder configuration windows. See [Setting a Reminder](#) for more information.

**F12 Brings Bar to Front** - This toggles the ButtonStar feature of bringing ButtonStar to the forefront when the F12 Key is pressed. This option is extremely convenient when you need to load another program and your current program is full screen. Note: This feature will not function when you have a DOS program full screen or in a window.

**Preferences...** - This selection will popup a second menu, where you select user preferences. The options are as follows:



**ButtonStar as Windows Shell** - This option sets ButtonStar to be the Windows Shell. De-selecting will revert your system back to where Program Manager is the shell. When ButtonStar is the Window's Shell, terminating ButtonStar will close the current Windows session.

**Confirm On Program Exit** option. Choosing this option will toggle whether or not you will be queried before program or windows shutdown.

**Minimize on Use** option. Select this option if you want ButtonStar to minimize to an icon after a program button is clicked.

**Enable Half-Hour Chime** option. Select this option if you want the ButtonStar Deluxe to chime on the Hour and Half Hour. The default chime is a ship's bell, but you can substitute any windows "WAV" file of your prefer. Makes change in the BBAR.INI File.

**Lock ButtonStar Position** option. Select this option if you want to disable the move window capability from ButtonStar. This will prevent inadvertently moving ButtonStar off the screen. De-selecting this item will enable the user to position ButtonStar anywhere on the screen.

**ButtonStar Always on Top** option. Select this menu item if you want the ButtonStar Clock icon or ButtonBar to be visible at all times, even if the current application is full screen.

**Configure A Button** - This selection will popup the Button configuration window. See [Configuring a Button](#) for more information. *[Use Tip] Clicking the Right Mouse button while the mouse cursor is over a button will bring the Configuration screen up for that particular button.*

**Move Button Position** - This selection will allow you move the location of a button from one spot to another or to a group. See [Change a Button's Position](#) for more information.

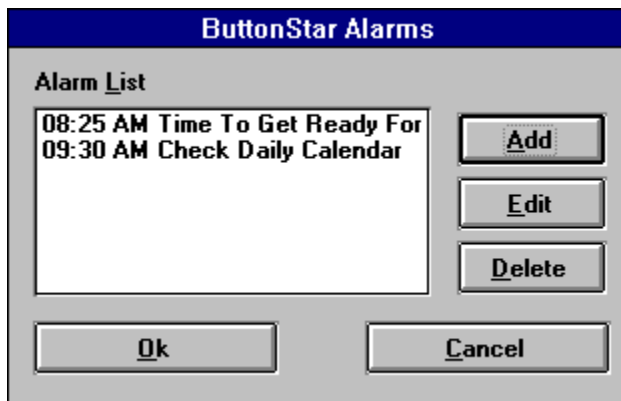
**ButtonStar Layout** - This selection will change the ButtonStar Layout matrix. See [Changing ButtonStar's Layout](#) for more information.

**About ButtonStar Deluxe** - This menu selection will display author, license and serial number information, as well as the ButtonStar Version.

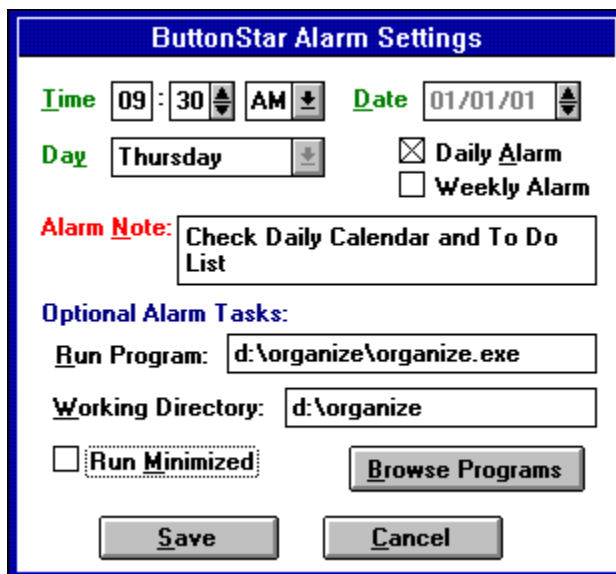
**Exit Windows(ButtonStar)** - Depending on whether or not you have selected "ButtonStar as Windows Shell" and/or "Exit Windows on Exit" in the Preferences menu, this menu item will close the ButtonStar program or windows. This is a fast exit. *[Use Tip] Double-Clicking the System Menu tab will terminate the program or windows.*

## Setting A Reminder Alarm

ButtonStar Deluxe Alarm feature allows you to set an unlimited number of Pop Up reminders. These reminders can be as simple as note to remind you of an important meeting, or to run a program at given date and time like a file backup program or a Email retrieval. A reminder can be as a daily occurrence, weekly event or for a date and time somewhere in the future,



**Setting up an Alarm.** Click the System Menu and select **Set Alarm Time**, (the Activate Alarm option must be checked) and the Reminder window (shown on left) will pop up. This window allows you to add, edit, and delete a reminder.



To add a new reminder, click the **Add Button** or edit an existing setting, click the item on the list and then click the **Edit Button**. The Alarm Setting window will popup and display a blank entries or the existing settings.

**The Optional Alarm Tasks.** This option allows you to execute a program at specific date and time, or as a daily event. Enter the program name and path manually or click the **Browse Program** button select your program using the directory list boxes.



**Snooze Alarm.** When the Reminder Alarm event occurs a box will pop up center screen. The note you attached to the event will be displayed. Click **OK** to acknowledge the reminder or **Snooze** to have the alarm sound again in 5 minutes. The default snooze setting is 5 minutes, but you can change this by adding or editing the 'Snooze=' line in the BBAR.INI file. (i.e. Snooze=10 for a 10 minute snooze setting.)

**Note:** The alarm event will only sound if ButtonStar is active. Should you load ButtonStar after the event the alarm will not sound.

## Using the PopUp Task Manager

\* Note: ButtonStar's Popup TaskManager is accessed by a single R/H mouse button click over the Windows desktop, not to be confused with the Windows Task Manager that is accessed by Double Clicking the L/H mouse button over the desktop or pressing the Control - Escape keys.



Clicking the Windows Desktop with R/H mouse button will display ButtonStar's Popup TaskManager. This popup menu will display up to 20 currently running programs/windows or programs that were set to be displayed as Pop-Up's in the Button Configuration. The Popup TaskManager shows active windows first then popup programs.

## Product Registration

This version of ButtonStar Deluxe has been distributed on a Shareware basis. You are granted a temporary license to evaluate this product before you purchase it. This evaluation period is not to exceed 30 days from the time you obtain ButtonStar, after which you must decide to register it or delete it from your computer system.

*Upon Registration you will receive the latest version of ButtonStar Deluxe. As a bonus for your honesty, you will receive Drive Watch (hard disk monitor program - network compatible) FREE.*

**ButtonStar Deluxe Registration Fee** is \$28.00 U.S. until 4/15/93 - \$39.00 After 4/15/93  
- International Orders add \$4.00 for postage.

Please print this page, fill it out and mail along with your payment to the address listed below:

Name: \_\_\_\_\_

Company: \_\_\_\_\_

Address: \_\_\_\_\_ PO Box: \_\_\_\_\_

City: \_\_\_\_\_

State: \_\_\_\_\_ Zipcode: \_\_\_\_\_ Country: \_\_\_\_\_

Phone: \_\_\_\_\_ Fax: \_\_\_\_\_

Floppy Disk Type: \_\_ 3½ or \_\_ 5¼ Disks (5¼ sent by default)

Current ButtonStar Version: \_\_\_\_\_

Where did you obtain ButtonStar: \_\_\_\_\_

Please make checks or money orders payable to Mark DiBiasio  
\* Maryland Residents add 5% Sales Tax.

Mail To: Mark DiBiasio  
c/o Software City  
15958-B Shady Grove Road  
Gaithersburg, Maryland 20877  
Tel. (301) 670-0818 Fax (301) 330-5087

### **Credit Cards accepted: MasterCard, Visa, American Express and Discover**

Call, Fax or Mail the following information:

Credit Card Type: Visa [ ] MasterCard [ ] American Express [ ]  
Discover [ ]

Credit Card Number: \_\_\_\_\_

Expiration Date: \_\_\_\_/\_\_\_\_

Name as on Your card: \_\_\_\_\_

Signature: \_\_\_\_\_

**Government and Corporate users require a Site License - please contact us directly.**



